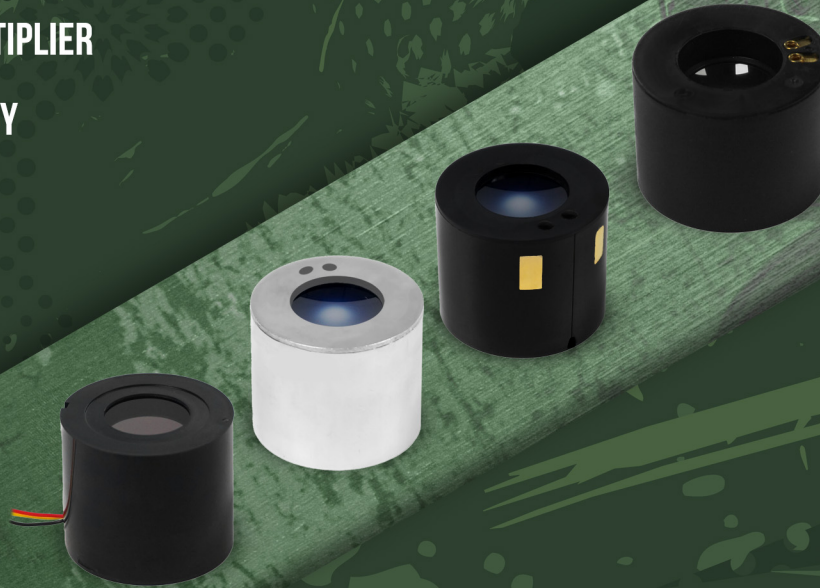


# NVT-5 MILITARY GRADE IMAGE INTENSIFIER TUBE

- ANTI-HALATION GLASS INPUT WINDOW
- SPHERICAL INVERTED IMAGE OUTPUT WINDOW
- MICRO-CHANNEL PLATE ELECTRON MULTIPLIER
- HIGH-PRECISION ASSEMBLY TECHNOLOGY
- CONTACT-TYPE ELECTRICAL INTERFACE
- MILITARY GRADE WITH AUTO-GATING



The image intensifiers are specially designed for night vision systems such as gun sights, which have features of high efficiency multi-alkali photocathode, anti-halation glass input window micro-channel plate electron multiplier, spherical erector optical fiber output window and P22 or P43 fluorescent screen. These techniques provide a very high SNR with a wide spectral detection range and excellent resolution even in low light conditions.

# PRODUCT SPECIFICATIONS

Performance Parameter		Minimum	Typical	Maxium	Unit
Figure of Merit		1600		1800	
Sensitivety	2856K	700		900	μA/lm
Signal-to-Noise Ratio		25			
Resolution		64			lp/mm
<b>Fast Auto-Gating Power Supply Unit</b>					
Response Time			0.3		s
Rise Time Off-to-On			0.6		s
Input Current			25		mA
<b>Other Technical Data</b>					
Phosphor		P22 (also available P43,P45)			
Operational Life Time		10000			h
Luminance Gain (2×10 <sup>-5</sup> lx)		12000		25000	cd/m <sup>2</sup> /lx
Max. Output Brightness		4		8	cd/m <sup>2</sup>
E.B.I				0.25	μlx
Weight(18mm)				85	g