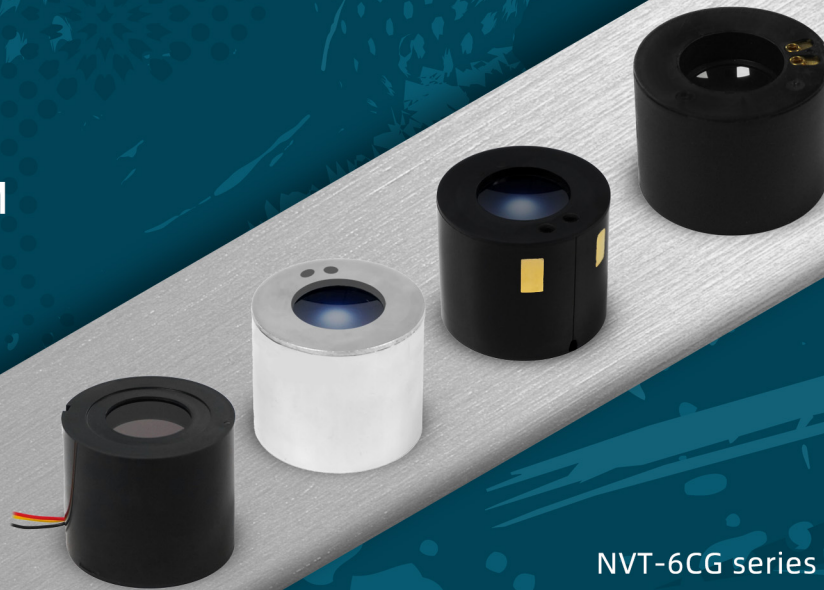


NVT-6 COMMERCIAL GRADE IMAGE INTENSIFIER TUBE

- FOM \geq 1800
- AVAILABLE IN 16MM AND 18MM TUBE
- GREEN OR WHITE PHOSPHOR
- AUTO-GATING CONTROL
- SPECTRAL RESPONSE RANGE: 380-900M



NVT-6CG series image tube is a commercial level image intensifier tube provided for commercial market, it has high performance, high cost performance, high reliability, all-day work and other characteristics, it adopts new MCP processing technology. This image intensifier tube has a variety of specifications positive image plane. Forward spherical surface, inverted image plane and inverted image spherical surface available.

PRODUCT SPECIFICATIONS

Performance Parameter		Minimum	Typical	Maxium	Unit
Figure of Merit		1800			
Sensitivity	2856K	850			μA/lm
	800nm	80			mA/W
	850nm	60			mA/W
Signal-to-Noise Ratio		26			
Resolution		68			lp/mm
Halo				1	mm
Fast Auto-Gating Power Supply Unit					
Response Time			0.3		s
Rise Time Off-to-On			0.6		s
Input Current				35	mA
Other Technical Data					
Phosphor		P43 (also available P45)			
Operational Life Time		10000			h
Luminance Gain (2×10 ⁻⁵ lx)		12000			cd/m ² /lx
E.B.I				0.25	μlx
Weight(16mm)				50	g
Weight(18mm)				80	g